

Construction Equipment AUCTION

TIMED ONLINE



OPENS: Tuesday, October 6
CLOSES: Tuesday, October 13 | 3PM 2020

AUCTIONEER'S NOTE: Make plans now for this Timed Online Auction from several local consignors. Please note the locations and owner's names on each item. Sales tax applies, exemption forms available. \$35 pc per titled item. Preview of the equipment will be by appointment only. All items to be removed within 14 days.



Consignor: River Cities Management
Steve Witt, 563.343.5247
200 E 90th Street, Davenport, IA

TUB GRINDERS & SCREENER

2005 Vermeer TG9000, 3,037 hrs., tub grinder, Cat 3412 engine, 12'2"x4', 4-axle spring ride, 11" tub, 96,000 lb. capacity, (16) steel wheels, 24.5 LP tires, S/N 1VRY4348761000119
Diamond Z 1463BT, tub grinder, twin 3408B-D1 engine, 11'6"x46", 2,351 hrs. on right engine, 2,245 hrs. on left engine, 10,000 total hrs. on machine, 3-axle spring ride, belt drive, 10' inside tub, 105,000 lb. capacity, extra screens, discharge conveyors, handheld remote, sells w/extra parts, (12) steel wheels, 24.5 tires, 1D9FX4531NN14704
2012 Vermeer TR521, 1,968 hrs., screener, 102"x50", Trummel screener, tandem axle, spring suspension, Cummins B3.3 engine (S/N 5542T), 17.5 tires

EXCAVATOR

Komatsu PC200LC, excavator, 9,161 hrs., 48" bucket, 32" tracks, standard arm, aux. hyd., S/N A85215
U.S. Pride, hyd. log splitting screw mounts for Komatsu excavator
Hydraulic Grapple, fits Komatsu excavator

DOZER

1998 Caterpillar D6M, dozer, 8,528 hrs., CAH, 12'8"x3'6", 6-way blade, 34" tracks

WHEEL LOADER

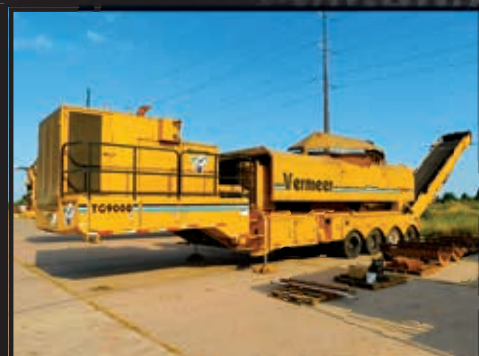
1996 John Deere 624G, wheel loader, bucket width 8'6", S/N DW324GB56255 (Owner states 18,000 hrs. est.)

SEMI TRUCKS

1986 Kenworth T-600A, day cab, NTC 350 Big Cam II engine, Eaton Fuller, 9 speed, AG100 air ride suspension, air slide 5th wheel, 150 gal. fuel tank, dual exhaust, SQ100 rear ends, 3.55 ratio, A/C, 17" WB, (10) alum. wheels, 24.5 tires, VIN 1XKAD29X8G5328631
1995 Kenworth T-400A, day cab, Cummins M-11 engine, Eaton Fuller, 9 speed, AG100 air ride suspension, 2-line wet kit, dual 120 gal. fuel tank, DS 402 rear ends, 4.11 ratio, 214" WB, (6) alum. wheels, (4) steel wheels, 22.5 LP tires, VIN 647171 (NON-RUNNING)

WALKING FLOOR TRAILER

1991 Trailmobile, Wilkens walking floor, 45'x96"x13", FRP sliding tandem, spring suspension, roll tarp, 2-line wet kit, steel wheels, 24.5 LP tires, VIN 1PT011SJ7M9008302



Consignor: Metro Pavers
Jerry Roth, 319.750.3269
2245 East Bluegrass Rd, Mt. Pleasant, IA

SEMI TRUCKS

2014 Peterbilt 348, 195,296 miles, straight truck, Pacar Allison, automatic, RDP41 rear end, Reyco 4-spring suspension, 4.88 ratio, 208" WB, single 90 gal. fuel tank, 138" back cab to center of axle, 204" back cab to end frame, A/C, cruise, AM/FM radio, 11R22.5 tires, (10) steel wheels, VIN 2NPL3L18X5FM2685
2011 Western Star, 251,045 miles, day cab, Detroit Diesel 13, 450 hp., Eaton Fuller, FR0 1210C 10 speed, Meritor RT-40 rear end, 3.58 ratio, 195" WB, diff. lock, airliner air ride suspension, air slide 5th wheel, single 100 gal. fuel tank, wet kit, engine brake, A/C, cruise, 11/22.5 steer tires, 455/50R22.5 drive tires, alum. wheels, VIN 5KJUALDV0BPAZ7189
1993 Western Star 4900, 538,816 miles, day cab, Caterpillar 3406C, Eaton Fuller RT014715 15 speed, DS402 rear ends, air ride suspension, dual 50 gal. fuel tank, 12,000 air up/air down steerable pusher axle, air slide 5th wheel, dual air ride seats, headache rack, A/C, 24.5LP tire on steer & drive, 22.5LP on pusher, (2) alum. (10) steel wheels, VIN 2WPKDCCH8PK931894

MIXER TRUCKS

2009 International 5600I, 124,336 miles, 13,013 hrs., mixer truck, 10 yard mixer, w/tag axle, VIN 1HTXHAHT97J538254
2006 International 5600I, 136,930 miles, 14,841 hrs., mixer truck, 10 yard mixer, w/tag axle, VIN 1HTXHAHT86J288965
2004 International 5600I, 120,845 miles, 13,428 hrs., mixer truck, Cummins ISM 350 hp., Allison, automatic, Meritor 46,000 lb. rear axles, 8,000 lb. tag axle, 20,000 lb. steer axle, air ride drives seat, A/C, McNeilos 10 yard mixer, 425/65R22.5 steer tires, 11R22.5 drive tires, 215/75R17.5 tag axle tires, steel wheels, VIN 1HTXHAHT55J034869
2004 International Mixer Truck 5600I, 132,017 miles, 13,895 hrs., mixer truck, 10 yard mixer, w/tag axle, VIN 1HTXHAHT35J034868

WATER TRUCK

1990 Ford L-8000, 62,779 miles, water truck, Allison, automatic, Ford in-line, Turbo charged, 6 cyl. diesel (S/N E7HH-9C-485-AB), twin screw tandem rear ends, walking beam suspension on rubber pads, 223" WB, single 50 gal. fuel tank, 4,000 gal. water tank, 11R22.5 drive tires, 385/65R22.5 steer tires, Dayton wheels, VIN 1FDZU82A0LVA19182

STREET SWEEPER

1994 Ford CF7000, 135,403 miles, 5,143 hrs., street sweeper, 5.9L, 6 cyl. diesel, automatic, 1994 Elgin Crosswinds Series G Sweeper (S/N G2338D), driver side & passenger side steering, spring ride, 11R22.5 fronts, 11R22.5 rears, VIN 1FDXKH70C7RA51260



PICKUPS
2007 Chevrolet 3500, 4WD, Vortex V8, gas, auto, dually, 10'x96" flatbed w/headboard, West Coast mirrors, 18"x18"x48" steel storage box, 162" WB, A/C, AM/FM radio, split bench seat, brake control, Reese receiver, 215/85R16 tires, steel wheels, VIN 1GBJJC34U75E171787
2006 Chevrolet 3500, 163,667 miles, 4WD, Vortex V8, gas, auto, dually, 10'x96" flat bed, w/ladder rack, West Coast mirrors, (2) 18"x18"x48" alum. storage boxes, 162" WB, AM/FM radio, split bench seat, brake control, Reese receiver, 215/85R16 tires, steel wheels, VIN 1GBJK34U96E171696
2005 Chevrolet 1500, 2WD, 4-door, crew cab, AM/FM/CD, tilt, cruise, split bench seat, 245/70R17 tires, VIN 2GCEC13TX51381084
2005 Chevrolet 2500, miles unknown, 2WD, Vortex V8 gas, automatic, 8' utility service box, Knapheide Tommy gate, AM radio, split bench seat, 245/75R16 tires, VIN 1GBHC24835E151304

BACKHOE

1996 Case 580 Super L, 7,412 hrs., backhoe, 4WD, CAH, 80" front end bucket w/bolt on cutting edge, 24" ho bucket, w/replacement teeth, S/N JJG0195396
SKID STEER
2003 Caterpillar 236, shows 1,071 hrs., skid steer, CAH, 72" bucket, ISO controls, hyd. quick attach, stand flow aux. hyd., foot control, 12R16.5 tires, S/N 00236A4YZ06900
MDS, pallet forks, 48", skid steer mount, S/N 00305

TRAILER

Step Deck Trailer, 48'x96", steel, 11' top deck, 37" main deck, triple axle, air ride suspension, wood floor, headboard, 215/75R17.5 tires, steel wheels

Consignor: BKBE Farms LLC
Brent Daufeldt, 319.631.0090
1215 Eliason Avenue, West Liberty, IA

EXCAVATOR

1999 Daewoo/Doosan 220LC-V, excavator, Daewoo 858TI engine, 1.54 yd. bucket, mechanical thumb, S/N 0210

Consignor: Secured Lender
Duane Norton, 515.450.7778
1603 S Eisenhower Ave, Mason City, IA

DOZERS

1999 Caterpillar D4C XL, dozer, 9,574 hrs., ROPS, 9' 6", 6-way blade, 18" tracks, S/N 8CS00581

Caterpillar D6C, dozer, unknown hrs., ROPS, sweeps, 10' semi-U 4-way blade, Carco F-50 winch, 24" tracks, S/N 769500269

EXCAVATOR & ATTACHMENTS

Caterpillar 305C CR, 4,466 hrs., excavator, hyd. quick change, CAH, hyd. thumb, 789" blade, 16" tracks, S/N CAT0305CCLHJ02134
Bobcat PC30, vibrating packer, for excavator, S/N 769500269

Caterpillar, excavator bucket, 36" tooth
Caterpillar, excavator bucket, 36" tooth
Single Pt. Ripper, Cat excavator attachment
Caterpillar 280-4200J, excavator bucket, 12" tooth, S/N HD8020269



Single Axle Trailer, 118'x75", mechanical tilt, 7.00x15LT tires

ANTIQUA TRACTORS

1947 Farmall B, 2WD, 540 PTO, NF, passenger seat, receiver hitch, rear belt pulley, 9.5-24 rears, 4.00-15 fronts, S/N 216555
Farmall M, 2WD, 1 hyd., 540 PTO, WF, rear fenders, rear 2" receiver hitch, (2) pairs of rear wheel weights, no S/N

MOTORCYCLE

Honda Shadow 1100, 26,516 miles, motorcycle, V-Twin liquid cooled, shaft drive, removable windshield, saddle bags, 170-80B-15 rear tires on Allow Mag wheels, 110-90-19 front tires on Allow Mag wheels, VIN 1H-FSC18081A501567

EQUIPMENT

Wacker PDT3A, trash pump, Honda GX120 gas engine
Semi Trash Pump, Honda GS120 gas engine
Laser Mast

Consignor: Gingerich Well & Pump Service

Jerry Roth, 319.750.3269
2245 East Bluegrass Rd, Mt. Pleasant, IA

CRANE TRUCK

1980 Ford, crane truck, Caterpillar V8, LT8000, 13 speed, VIN U80UVG45547

Consigned by Others

More Information Coming!
Jerry Roth, 319.750.3269
2245 East Bluegrass Rd, Mt. Pleasant, IA

2017 Caterpillar 301.7D, mini excavator, 787 hrs., cab, aux. hyd., S/N CAT3017DCLJ400484

(2) Posi Track C-50, track skid steer, aux. hyd., ASV undercarriage, rubber tracks
P&H 250, crane truck, 35 Ton crane
Ford F-550, service truck, welder

BACKHOE, DOZER & TRAILER

1992 John Deere 410D, 4,757 hrs., backhoe, cab, heat, 4x4, standard hoe, 8' 4-in-1 bucket, 24" hoe bucket, Reman engine (NEW), torque converter (NEW), S/N T0410CG6778490
Case 450, dozer, ROPS, sweeps
Equipment Trailer, 18' + 5' dovetail, spring suspension, swing over ramps, wood floor, pintle hitch, 8/14.5 tires, (8) steel wheels

2010 Carry On Trailer Corp, single axle, 66"x48", 4.80-12 tires, VIN 4YMUL0515AM043069

Aluma, utility trailer, 10' 6"x78", single axle, 4' full width fold down ramp, removable sides, pintle hitch, torsion suspension, 215/75R14 tires



2012 Chevrolet K2500HD LT Silverado Z71, 147,451 miles, 4WD, Vortex, gas, auto, crew cab, 6-1/2' box, split bench cloth, power locks, mirrors, & windows, cruise, power seat, trailer brake, LT265/70R18 on Alloy wheels, VIN 1GC1KXCG9CF237720 (fuel tank & toolbox not included)

TRAILERS

1996 Landoll, detach, 53'x102", triple axle, 24' 6" well, wood over steel deck (some wood deck missing), air ride, 255/70R22.5 on steel duals, VIN 1LH3Z7VJ8T1008121

2002 Felling, deck over, 25'+5' dovetail x 102" tandem axle, (2) folding ramps, pintle hitch, brakes, 215/75R17.5 tires, VIN 16JF01622P1024366

2016 PJ, single axle, 8'x5', 3,500 lb. GAWR, 4' mesh ramp, diamond plate fenders, wood floor, 2" ball, 205/75R15 tires, VIN 3CVU60819G2545464

Tandem Axle, flatbed trailer, 18'x83", bumper hitch, (2) 5" steel fold up ramps, pintle hitch, front toolbox, spring ride, 7.50R16 tires

2010 Carry On Trailer Corp, single axle, 66"x48", 4.80-12 tires, VIN 4YMUL0515AM043069

Aluma, utility trailer, 10' 6"x78", single axle, 4' full width fold down ramp, removable sides, pintle hitch, torsion suspension, 215/75R14 tires

Consignor: Secured Lender
Duane Norton, 515.450.7778
1603 S Eisenhower Ave, Mason City, IA

2017 Caterpillar 301.7D, mini excavator, 787 hrs., cab, aux. hyd., S/N CAT3017DCLJ400484

(2) Posi Track C-50, track skid steer, aux. hyd., ASV undercarriage, rubber tracks
P&H 250, crane truck, 35 Ton crane
Ford F-550, service truck, welder

BACKHOE, DOZER & TRAILER

1992 John Deere 410D, 4,757 hrs., backhoe, cab, heat, 4x4, standard hoe, 8' 4-in-1 bucket, 24" hoe bucket, Reman engine (NEW), torque converter (NEW), S/N T0410CG6778490
Case 450, dozer, ROPS, sweeps
Equipment Trailer, 18' + 5' dovetail, spring suspension, swing over ramps, wood floor, pintle hitch, 8/14.5 tires, (8) steel wheels

2010 Carry On Trailer Corp, single axle, 66"x48", 4.80-12 tires, VIN 4YMUL0515AM043069

Aluma, utility trailer, 10' 6"x78", single axle, 4' full width fold down ramp, removable sides, pintle hitch, torsion suspension, 215/75R14 tires



2003 Caterpillar 3406B, 350 hp., Eaton Fuller, 10 speed, tandem axle, 2-line wet kit, single exhaust, single alum. fuel tank, air ride, full wrap fender, 150" WB, Michelin 11R22.5 drive tires, 11R22.5 steer tires, steel wheels, VIN 1XKDD89X3M0561184

CONCRETE TRUCKS

1991 Kenworth Construct T-800, shows 686.48 miles, day cab, Caterpillar 3406B, 350 hp., Eaton Fuller, 10 speed, tandem axle, 2-line wet kit, single exhaust, single alum. fuel tank, air ride, full wrap fender, 150" WB, Michelin 11R22.5 drive tires, 11R22.5 steer tires, steel wheels, VIN 1XKDD89X3M0561184

CONCRETE TRUCKS

1991 Kenworth Construct T-800, shows 686.48 miles, day cab, Caterpillar 3406B, 350 hp., Eaton Fuller, 10 speed, tandem axle, 2-line wet kit, single exhaust, single alum. fuel tank, air ride, full wrap fender, 150" WB, Michelin 11R22.5 drive tires, 11R22.5 steer tires, steel wheels, VIN 1XKDD89X3M0561184

CONCRETE TRUCKS

1991 Kenworth Construct T-800, shows 686.48 miles, day cab, Caterpillar 3406B, 350 hp., Eaton Fuller, 10 speed, tandem axle, 2-line wet kit, single exhaust, single alum. fuel tank, air ride, full wrap fender, 150" WB, Michelin 11R22.5 drive tires, 11R22.5 steer tires, steel wheels, VIN 1XKDD89X3M0561184

1991 Kenworth Construct T-800, shows 686.48 miles, day cab, Caterpillar 3406B, 350 hp., Eaton Fuller, 10 speed, tandem axle, 2-line wet kit, single exhaust, single alum. fuel tank, air ride, full wrap fender, 150" WB, Michelin 11R22.5 drive tires, 11R22.5 steer tires, steel wheels, VIN 1XKDD89X3M0561184

1991 Kenworth Construct T-800, shows 686.48 miles, day cab, Caterpillar 3406B, 350 hp., Eaton Fuller, 10 speed, tandem axle, 2-line wet kit, single exhaust, single alum. fuel tank, air ride, full wrap fender, 150" WB, Michelin 11R22.5 drive tires, 11R22.5 steer tires, steel wheels, VIN 1XKDD89X3M0561184

1991 Kenworth Construct T-800, shows 686.48 miles, day cab, Caterpillar 3406B, 350 hp., Eaton Fuller, 10 speed, tandem axle, 2-line wet kit, single exhaust, single alum. fuel tank, air ride, full wrap fender, 150" WB, Michelin 11R22.5 drive tires, 11R22.5 steer tires, steel wheels, VIN 1XKDD89X3M0561184

1991 Kenworth Construct T-800, shows 686.48 miles, day cab, Caterpillar 3406B, 350 hp., Eaton Fuller, 10 speed, tandem axle, 2-line wet kit, single exhaust, single alum. fuel tank, air ride, full wrap fender, 150" WB, Michelin 11R22.5 drive tires, 11R22.5 steer tires, steel wheels, VIN 1XKDD89X3M0561184

1991 Kenworth Construct T-800, shows 686.48 miles, day cab, Caterpillar 3406B, 350 hp., Eaton Fuller, 10 speed, tandem axle, 2-line wet kit, single exhaust, single alum. fuel tank, air ride, full wrap fender, 150" WB, Michelin 11R22.5 drive tires, 11R22.5 steer tires, steel wheels, VIN 1XKDD89X3M0561184

1991 Kenworth Construct T-800, shows 686.48 miles, day cab, Caterpillar 3406B, 350 hp., Eaton Fuller, 10 speed, tandem axle, 2-line wet kit, single exhaust, single alum. fuel tank, air ride, full wrap fender, 150" WB, Michelin 11R22.5 drive tires, 11R22.5 steer tires, steel wheels, VIN 1XKDD89X3M0561184

1991 Kenworth Construct T-800, shows 686.48 miles, day cab, Caterpillar 3406B, 350 hp., Eaton Fuller, 10 speed, tandem axle, 2-line wet kit, single exhaust, single alum. fuel tank, air ride, full wrap fender, 150" WB, Michelin 11R22.5 drive tires, 11R22.5 steer tires, steel wheels, VIN 1XKDD89X3M0561184

1991 Kenworth Construct T-800, shows 686.48 miles, day cab, Caterpillar 3406B, 350 hp., Eaton Fuller, 10 speed, tandem axle, 2-line wet kit, single exhaust, single alum. fuel tank, air ride, full wrap fender, 150" WB, Michelin 11R22.5 drive tires, 11R22.5 steer tires, steel wheels, VIN 1XKDD89X3M0561184

1991 Kenworth Construct T-800, shows 686.48 miles, day cab, Caterpillar 3406B, 350 hp., Eaton Fuller, 10 speed, tandem axle, 2-line wet kit, single exhaust, single alum. fuel tank, air ride, full wrap fender, 150" WB, Michelin 11R22.5 drive tires, 11R22.5 steer tires, steel wheels, VIN 1XKDD89X3M0561184

1991 Kenworth Construct T-800, shows 686.48 miles, day cab, Caterpillar 3406B, 350 hp., Eaton Fuller, 10 speed, tandem axle, 2-line wet kit, single exhaust, single alum. fuel tank, air ride, full wrap fender, 150" WB, Michelin 11R22.5 drive tires, 11R22.5 steer tires, steel wheels, VIN 1XKDD89X3M0561184

1991 Kenworth Construct T-800, shows 686.48 miles, day cab, Caterpillar 3406B, 350 hp., Eaton Fuller, 10 speed, tandem axle, 2-line wet kit, single exhaust, single alum. fuel tank, air ride, full wrap fender, 150" WB, Michelin 11R22.5 drive tires, 11R22.5 steer tires, steel wheels, VIN 1XKDD89X3M0561184

1991 Kenworth Construct T-800, shows 686.48 miles, day cab, Caterpillar 3406B, 350 hp., Eaton Fuller, 10 speed, tandem axle, 2-line wet kit, single exhaust, single alum. fuel tank, air ride, full wrap fender, 150" WB, Michelin 11R22.5 drive tires, 11R22.5 steer tires, steel wheels, VIN 1XKDD89X3M0561184

1991 Kenworth Construct T-800, shows 686.48 miles, day cab, Caterpillar 3406B, 350 hp., Eaton Fuller, 10 speed, tandem axle, 2-line wet kit, single exhaust, single alum. fuel tank, air ride, full wrap fender, 150" WB, Michelin 11R22.5 drive tires, 11R22.5 steer tires, steel wheels, VIN 1XKDD89X3M0561184

1991 Kenworth Construct T-800, shows 686.48 miles, day cab, Caterpillar 3406B, 350 hp., Eaton Fuller, 10 speed, tandem axle, 2-line wet kit, single exhaust, single alum. fuel tank, air ride, full wrap fender, 150" WB, Michelin 11R22.5 drive tires, 11R22.5 steer tires, steel wheels, VIN 1XKDD89X3M0561184



2003 Caterpillar 3406B, 350 hp., Eaton Fuller, 10 speed, tandem axle, 2-line wet kit, single exhaust, single alum. fuel tank, air ride, full wrap fender, 150" WB, Michelin 11R22.5 drive tires, 11R22.5 steer tires, steel wheels, VIN 1XKDD89X3M0561184

CONCRETE TRUCKS

1991 Kenworth Construct T-800, shows 686.48 miles, day cab, Caterpillar 3406B, 350 hp., Eaton Fuller, 10 speed, tandem axle, 2-line wet kit, single exhaust, single alum. fuel tank, air ride, full wrap fender, 150" WB, Michelin 11R22.5 drive tires, 11R22.5 steer tires, steel wheels, VIN 1XKDD89X3M0561184

CONCRETE TRUCKS

1991 Kenworth Construct T-800, shows 686.48 miles, day cab, Caterpillar 3406B, 350 hp., Eaton Fuller, 10 speed, tandem axle, 2-line wet kit, single exhaust, single alum. fuel tank, air ride, full wrap fender, 150" WB, Michelin 11R22.5 drive tires, 11R22.5 steer tires, steel wheels, VIN 1XKDD89X3M0561184

CONCRETE TRUCKS

1991 Kenworth Construct T-800, shows 686.48 miles, day cab, Caterpillar 3406B, 350 hp., Eaton Fuller, 10 speed, tandem axle, 2-line wet kit, single exhaust, single alum. fuel tank, air ride, full wrap fender, 150" WB, Michelin 11R22.5 drive tires